

State of Wyoming Corner Record

(In compliance with the CORNER PERPETUATION AND FILING ACT, Wyoming Statutes, 1997 Section 33-29-140 et. seq., and the Rules and Regulations of the Board of Professional Engineers and Professional Land Surveyors)

Reverse side of this form may be used if more space is needed.

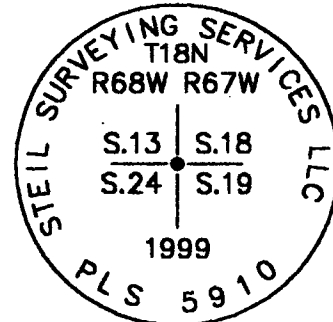
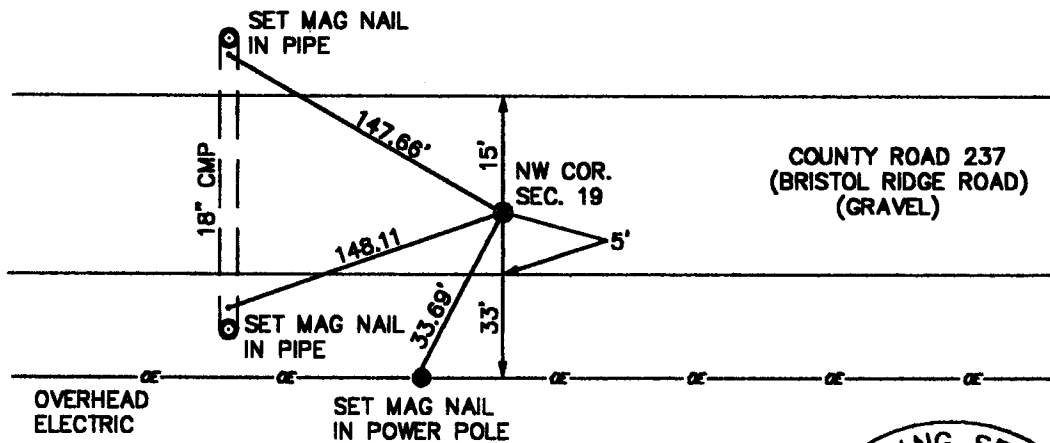
Record of original survey and citation of source of historical information (if corner is lost or obliterated). Description of corner monumentation evidence found and/or monument and accessories established to perpetuate the location of this corner. Sketch of relative location of monument, accessories, and reference points with course and distance to adjacent corner(s) (if determined in this survey). Method and rationale for reestablishment of lost or obliterated corner.

GLO RECORD: SET A GRANITE BOULDER 17" X 9" X 6" FOR CORNER TO SECTIONS 13, 24, 18, AND 19.

MONUMENT FOUND: NOTHING FOUND.

MONUMENT SET: SET A 5/8" X 24" REBAR WITH A 3 1/4" ALUMINUM CAP DOWN 0.5' BELOW SURFACE OF COUNTY ROAD 237 (BRISTOL RIDGE ROAD). CAP IS STAMPED AS SHOWN BELOW.

REFERENCES: MONUMENT LIES 33' NORTH OF A E-W POWERLINE, 5' NORTH OF THE SOUTH EDGE OF COUNTY ROAD 237 AND 15' SOUTH OF THE NORTH EDGE OF COUNTY ROAD 237. SET MAG NAILS FOR REFERENCE. REFERENCES ARE SHOWN BELOW.



Date of Field Work: 9/14/99

Office Reference: 99209

Monument Inscription

Cross Index Plat

	1	2	3	4	5	6	7	8	9	10	11	12	13	14	15	16	17	18	19	20	21	22	23	24	25
A																									
B	+	+	+	+	+	+	+	+	+	+	+	+	+	+	+	+	+	+	+	+	+	+	+	+	+
C	+	6	+	5	+	4	+	3	+	2	+	1	+												
D	+																								
E	+																								
F	+																								
G	+	7	+	8	+	9	+	10	+	11	+	12	+												
H	+																								
J	+																								
K	+																								
L	+	18	+	17	+	16	+	15	+	14	+	13	+												
M	+																								
N	+																								
O	+																								
P	+	19	+	20	+	21	+	22	+	23	+	24	+												
Q	+																								
R	+																								
S	+																								
T	+	30	+	29	+	28	+	27	+	26	+	25	+												
U	+																								
V	+																								
W	+																								
X	+	31	+	32	+	33	+	34	+	35	+	36	+												
Y	+																								
Z	+																								
	1	2	3	4	5	6	7	8	9	10	11	12	13	14	15	16	17	18	19	20	21	22	23	24	25

Firm/Agency, Address

STEIL SURVEYING SERVICES, LLC.
1102 WEST 19th STREET
CHEYENNE WY 82001
 Telephone Number: (307) 634-7273

This corner record was prepared by me or under my direction and supervision.

SRAL & SIGNATURE



Corner Name NW CORNER Section 19, T 18 N, R 67 W, 6th P.M.

Cross-Index No.: N-1

County: LARAMIE WYOMING

SBRPEPLS/PLSW: March 1994; PLSW January 1998

